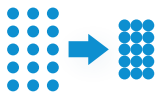


# Leachate Treatment

Using Aquaporin Inside® forward osmosis



## UNIQUE CUTTING-EDGE PRODUCT



### HIGH EFFICIENCY

5x volume reduction for pre-treatment leachate



### HIGH REJECTION

High rejection of trace elements



### HIGH WATER RECOVERY

> 82% of the water can be reused and recycled



### COST REDUCTION

Over 80% reduction in leachate treatment cost



### DECENTRALISED TREATMENT

Landfill leachate treated, reused & disposed in-situ

Landfill leachate production is a persistent global environmental pollution issue that is difficult to solve. This is due to its' inherent high pollution load and varying composition depending on the 'waste age'. Regardless of the method used, treatment is usually expensive. When left untreated, leachate presents as a

problem to both ground and surface water sources. Aquaporin Inside® forward osmosis membranes can become a cost-effective novel technology that can be combined with solar evaporation & condensation to take on this issue.

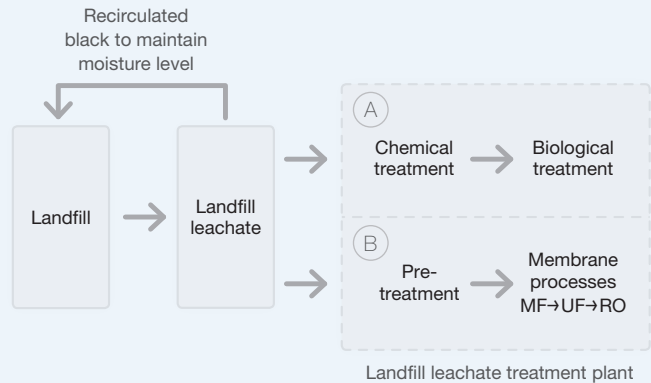
# LEACHATE TREATMENT USING FORWARD OSMOSIS

## Current process

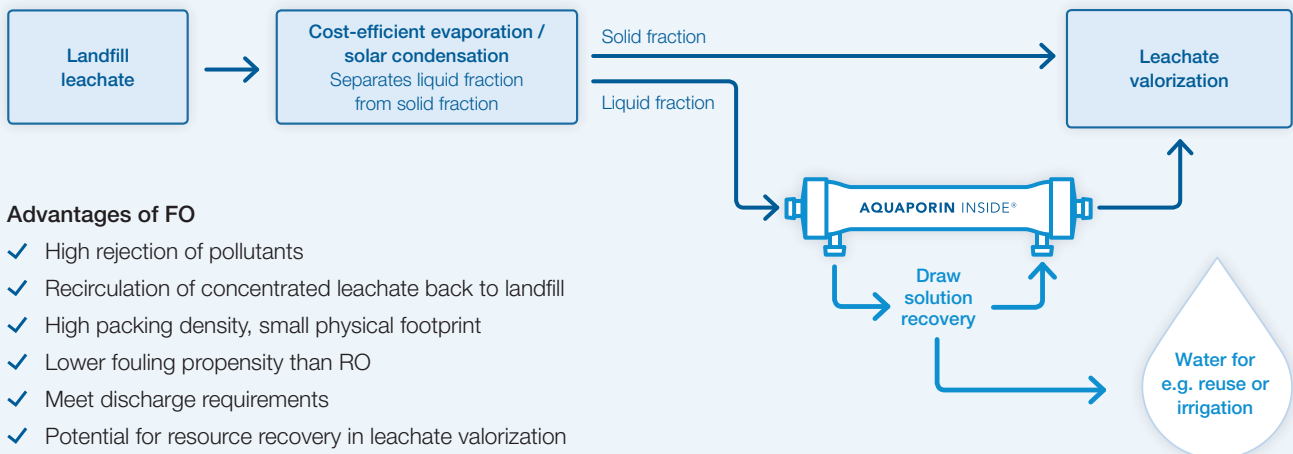
In the absence of treatment, leachate is either sent to wastewater treatment plant (WWTP) or recirculated back to landfill to maintain moisture levels for microbial activity.

Issues arising from current process:

- Backlash from WWTP over stringent discharge requirements
- WWTP has to be individually customized to each landfill's characteristics (no "one-fit-all" solution)
- Offsite treatment incurs high hauling and disposal costs
- On-site treatment has land & space constraints



## Incorporating Aquaporin Inside® FO



### Advantages of FO

- ✓ High rejection of pollutants
- ✓ Recirculation of concentrated leachate back to landfill
- ✓ High packing density, small physical footprint
- ✓ Lower fouling propensity than RO
- ✓ Meet discharge requirements
- ✓ Potential for resource recovery in leachate valorization

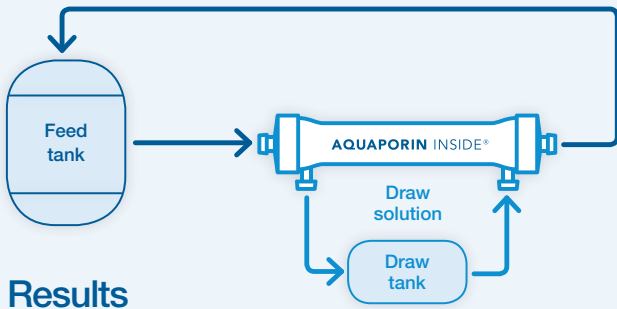
## CASE STUDY

### Landfill leachate condensate concentration using Aquaporin Inside® hollow fiber FO

#### Method

A lab-scale study using Aquaporin Inside® HFFO2 was carried out to validate the technical feasibility. Experiments were performed in FO mode where active layer of the membrane was facing the feed side.

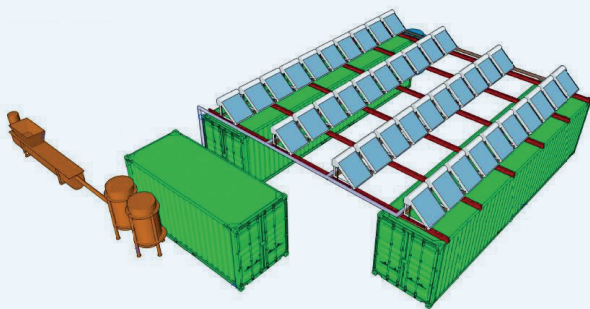
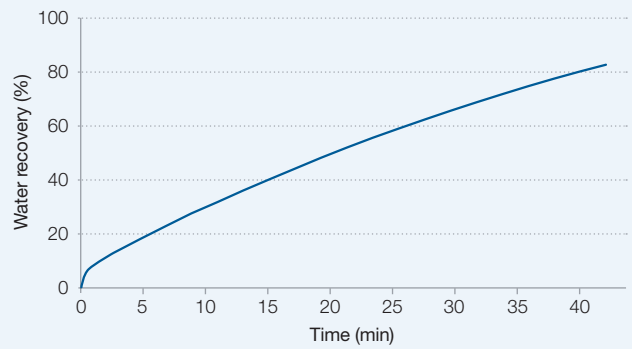
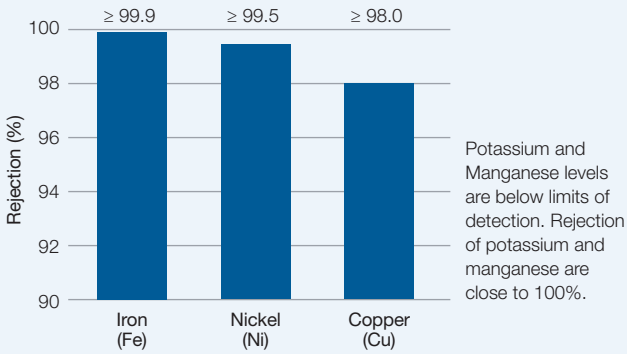
<b>Mode of operation</b>	Feed and draw in batch mode
<b>Draw solution</b>	35 L of 2M MgCl <sub>2</sub>
<b>Feed solution</b>	31 L of landfill leachate condensate Potassium: 35.3 mg/L Manganese: 0.009 mg/L Iron: 0.22 mg/L Nickel: 0.05 mg/L Copper: 0.56 mg/L
<b>Operating conditions</b>	60 L/h feed inlet   25 L/h draw inlet FO mode (feed in lumen side), counter-current, room temperature (20°C)
<b>Membrane type</b>	Aquaporin Inside® Hollow Fiber Forward Osmosis Module (2.3m <sup>2</sup> )
<b>Membrane QC</b>	Before and after test



## Results

Hollow Fiber FO batch concentration results:

- ✓ More than 5x reduction of landfill leachate condensate (82% recovery)
- ✓ High rejection of unwanted compounds



## Pilot plant under construction

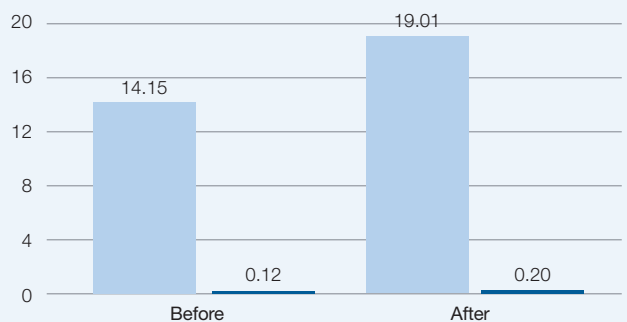
The Life Leachless project partners were very satisfied with the permeate quality and the achieved landfill leachate volume reduction. A lab scale system has been setup at Triton Water Group to conduct further FO testing. The Life Leachless project is currently focusing on the design and construction of a pilot plant. The pilot unit will be used for 2 replication studies (1 in Spain and 1 in Greece).

## Quality control test

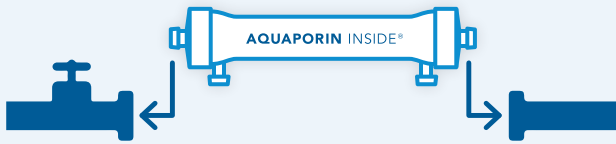
Membrane QC tests were carried out before and after application to check for irreversible fouling during the filtration process. FO performance remains within acceptable range after cleaning. Further studies will be required to investigate the cause of the increase in water flux and reverse salt flux.

Membrane QC tests before and after applications with subsequent cleaning

■  $J_w$  (LMH)
 ■  $J_s/J_w$  (g/L)



## CONCLUSIONS



The Aquaporin Inside® FO can be used to concentrate landfill leachate liquid, and at the same time reject the unwanted compounds which allows for water reuse or safely discharge of the permeate.

### About Aquaporin

Aquaporin A/S is a global water technology company located in Kongens Lyngby, Denmark.

Aquaporin is dedicated to revolutionizing water purification with its' novel membrane technology.

The main goal of Aquaporin is to develop the Aquaporin Inside® technology which is capable of separating and purifying water from all other compounds.

The Aquaporin Inside® platform uses biotechnological principles in a technological context, which is a novel upcoming field with large commercial perspectives. This is a field where Denmark has taken an early global lead.

### About Pure Water Enterprises Pvt. Ltd.

Pure Water Enterprises Pvt. Ltd. is a leading environment technology and service distributor over the last 20 years in Western India.

It is located in Mumbai, the commercial capital and gateway for the largest industrial zones in India.

Pure Water Enterprises has successfully forged strong relationships with more than 1000 end-users, systems integrators, and consultants in the region. Pure Water Enterprises provides both facilities to carry out trials and systems for commercial applications. For more information, please contact Pure Water's experts at [info@purewaterent.net](mailto:info@purewaterent.net) or **+91 22-24715665**.

**Aquaporin A/S**  
Nymøllevej 78  
2800 Kongens Lyngby  
Denmark

Phone: +45 8230 3082  
[sales@aquaporin.com](mailto:sales@aquaporin.com)  
[www.aquaporin.com](http://www.aquaporin.com)

**Aquaporin Asia Pte Ltd**  
1 Cleantech Loop, #02-14  
Cleantech One  
Singapore 637141

Phone: +65 6268 6343  
[sales@aquaporin.asia](mailto:sales@aquaporin.asia)

**Aquapoten Company Ltd.**  
12A Shougang International Trade Tower  
No. 60 Xizhimen North Street  
Haidian District, Beijing, 100082, China

Phone: +86-10-52408461  
[business@aquapoten.com](mailto:business@aquapoten.com)  
[www.aquapoten.com](http://www.aquapoten.com)